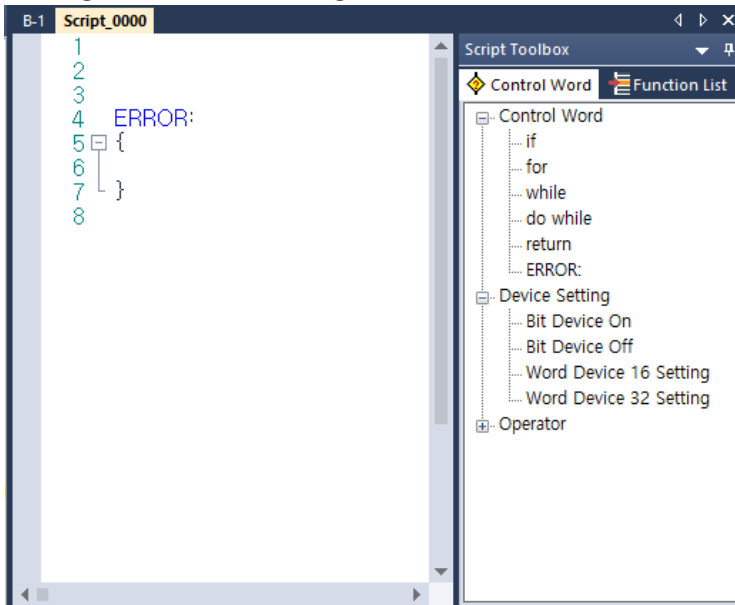


XP-Builder V3.80 Improvement & Addition

1. Improvement & Addition

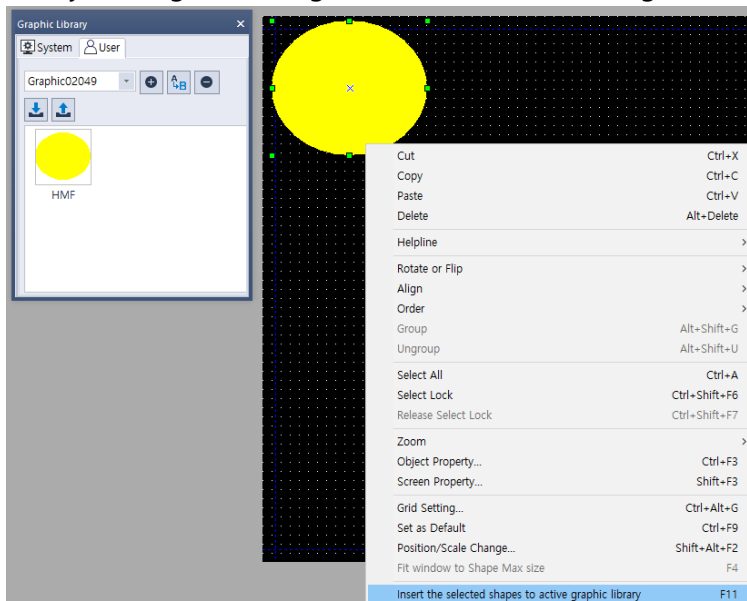
1) [XP-Builder] Improved Script toolbox UI/UX

- Improved to automatically dock the script tool toolbox to the script view page instead of the existing main frame docking.



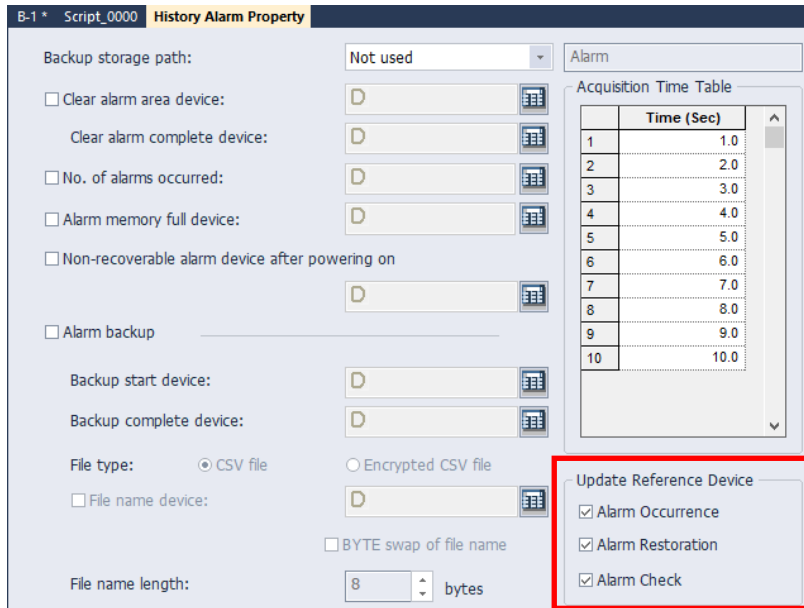
2) [XP-Builder] Improved registration of figures as HMF vector images

- Improved function to automatically create a category if there is no category in the user graphic library and register the figure as an HMF vector image.



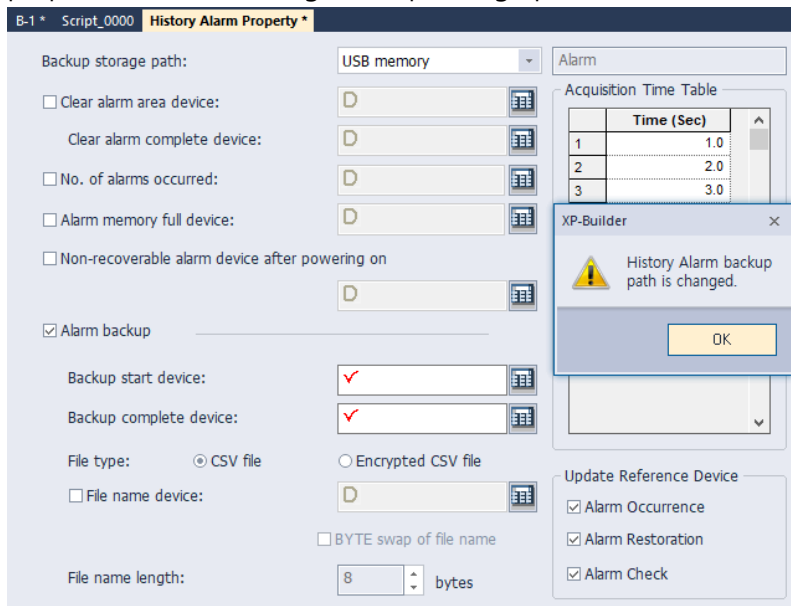
3) [XP-Builder] Improved registration of figures as HMF vector images

- Added a function to update the reference device value at the time of history alarm occurrence, restoration, and check.



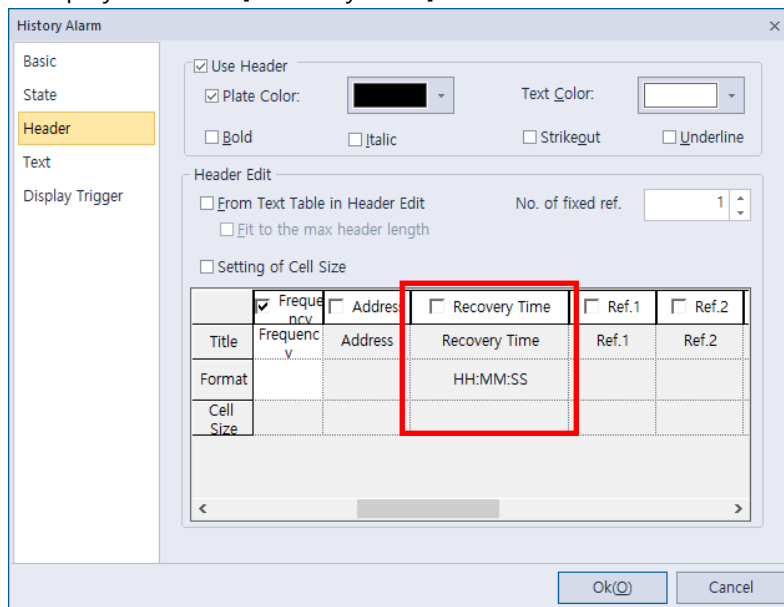
4) [XP-Builder] Improved alarm backup enable setting UI

- Added function to automatically check/uncheck [Alarm backup] and enable/disable related properties when selecting [Backup storage path] combo box.



5) [XP-Builder/XP-Runtime] Added [Recovery Time] display function to history alarm viewer

- Added a function that automatically calculates the time taken from alarm occurrence to recovery and displays it in the [Recovery Time] column.



2. Error Correction

- 1) [XP-Builder] Fixed the problem of displaying an error of 1 pixel when resizing an ellipse figure.
- 2) [XP-Builder] Fixed the phenomenon that the insertion screen object of the base screen is shown as the background when selecting the overlap of [Window type] in the bit window object.
- 3) [XP-Builder] Corrected the phenomenon that alarm backup properties are activated when CF card is selected in history alarm backup setting in models that do not support CF card.
- 4) [XP-Builder] Fixed the error that XEC-DNxxSU, XGI-CPUZ PLC tag could not be read.
- 5) [XP-Builder] Fixed the problem of word message condition error popping up in certain project.
- 6) [XP-Runtime] Fixed abnormal behavior during PDF viewing.
- 7) [XP-Runtime] Fixed an issue where the history alarm disappears under certain conditions.
- 8) [XP-Runtime] Improved to record Previous Value in the operation log of the number input device.
- 9) [XP-Runtime] Fixed a problem that does not work when an abnormal frame is input to the barcode reader.
- 10) [XP-Remote] Fixed the phenomenon that the offset applied value is different from the value displayed on the HMI screen when connecting XP-Remote.
- 11) [wXP] Fixed the phenomenon that some object values are not displayed when restarting after exiting wXP.

3. Communication Driver

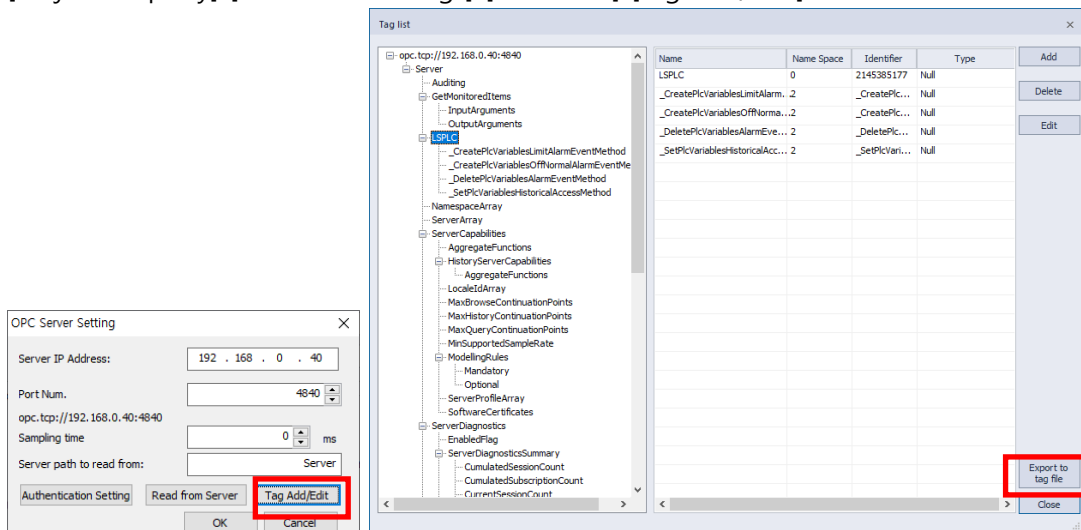
1) Improvement

(1) OPC UA Client

- Added export function to CSV file.

a. How to use:

[Project Property]-[XGT Panel Settings]-[Controller]-[Tag Add/Edit]



b. Note:

The selected root at the time of export becomes the group name (Example> In the case of #2 above, LSPLC becomes the group name)

[Name] is specified as the variable name when exporting (except for namespace and identifier)

[Type] is registered as BIT for Boolean and WORD for the rest.

[Device] consists of variable name + namespace + identifier at the time of export (three combinations are unique keys)

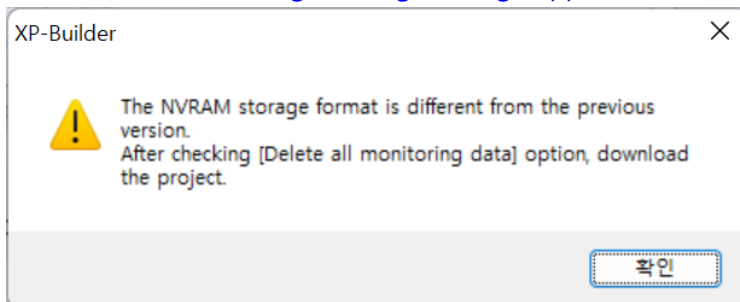
c. How to import CSV file: Click [Right-click]-[Import XG5000 Symbol] in the [Tag] tab.

	Name	Device Type	Address	Description
	NVRAM_Low_Battery	BIT	HS0950.0	NVRAM Low Battery Warning
	NVRAM_Invalid_Data	BIT	HS0950.1	NVRAM Invalid Data Warning
	_No_Logging_Backup_Storage	BIT	HS0951.0	No Logging Backup Storage
	_No_Recipe_Backup_Storage	BIT	HS0951.1	No Recipe Backup Storage
	_No_Screen_Backup_Storage	BIT	HS0951.2	No Screen Backup Storage
	_No_Printer	BIT	HS0951.4	No Printer
	_USB_Over_Current_Warning	BIT	HS0950.3	USB Over Current Warning
	_No_Alarm_Backup_Storage	BIT	HS0951.3	No Alarm Backup Storage
	_ON	BIT	HS0000.0	Always ON
	_OFF	BIT	HS0000.1	Always OFF
11	_T200MS	BIT	HS0000.6	200ms ON-OFF Timer
12	_T1S	BIT	HS0000.7	1s ON-OFF Timer
13	_T2S	BIT	HS0000.8	2s ON-OFF Timer
14	_T5S	BIT	HS0000.9	5s ON-OFF Timer
15	_T10S	BIT	HS0000.A	10s ON-OFF Timer
16	_T30S	BIT	HS0000.B	30s ON-OFF Timer
17	_T60S	BIT	HS0000.C	60s ON-OFF Timer
18	_OSVER_MAJ	wORD	HS0001	OS Version (Major)
19	_OSVER_MIN	wORD	HS0002	OS Version (Minor)
20	_YEAR	wORD	HS0004	XGT Panel Date[Year]
21	_MON	wORD	HS0005	XGT Panel Date[Month]
22	_DAY	wORD	HS0006	XGT Panel Date[Day]
23	_HOUR	wORD	HS0007	XGT Panel Time[Hour]
24	_MIN	wORD	HS0008	XGT Panel Time[Minute]
25	_SEC	wORD	HS0009	XGT Panel Time[Second]
26	_BASESCREEN_NO	wORD	HS0010	No. of Base Screens
27	_GLOBALWNG1_NO	wORD	HS0011	No. of Global Screen #1
28	_GLOBALWNG2_NO	wORD	HS0012	No. of Global Screen #2
29	_SECURITY_NO	wORD	HS0013	Current Security Level
30	_ZERO	wORD	HS0014	Always 0
31	_C500MS	wORD	HS0015	500ms Counter
32	_C1S	wORD	HS0016	1s Counter
33	_C2S	wORD	HS0017	2s Counter

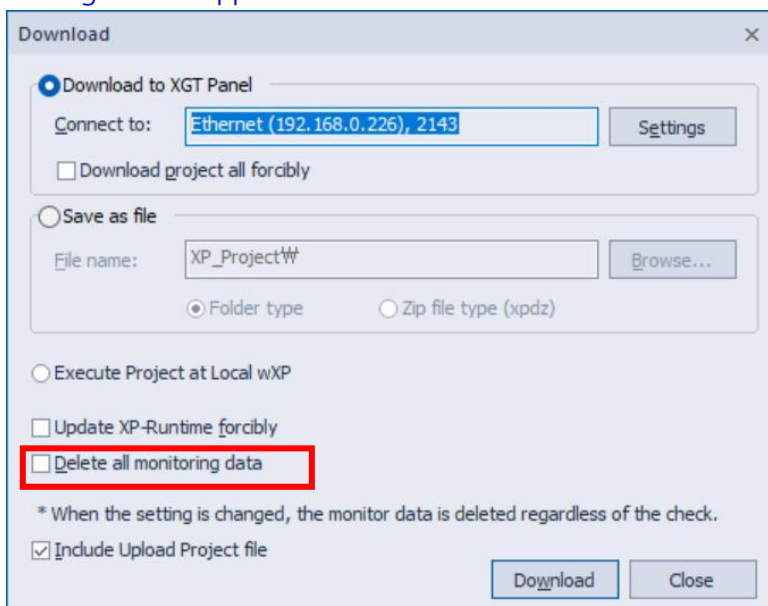
- Fixed flickering when using text input.
- Added function to save [Server path to read from] to project file.
- Resolving intermittent error code (0x800F: BadNothingToDo) and screen transition instability

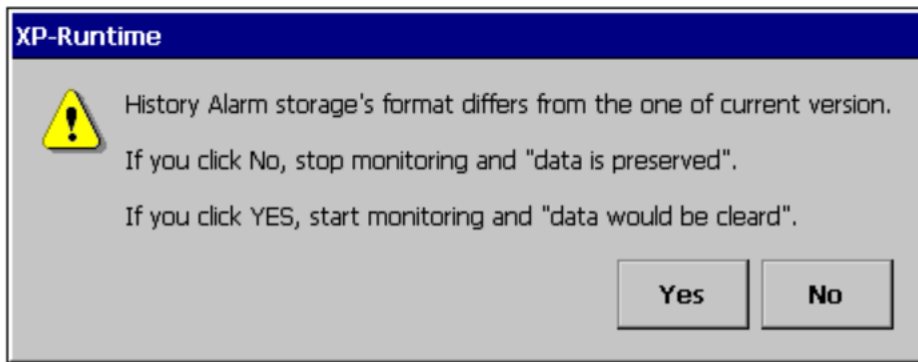
XP-Builder V3.80.0605 Improvement

- (1) [XP-Builder] Fixed an issue where the coordinates/size of circular objects were distorted when opening a project saved in a previous version in V3.80.
 - If a circle shape is newly drawn in V3.80.0403, the size needs to be reset in V3.80.0605.
- (2) [XP-Builder] Fixed an issue where internal device areas were displayed overlapping when selecting some series in English XP-Builder.
- (3) [XP-Builder] Fixed device map icon display error.
- (4) [XP-Builder] Correct color picker color selection error when enlarging the monitor magnification.
- (5) [XP-Builder] Fixed lamp operation condition error in some projects when sending project.
- (6) [XP-Builder/XP-Runtime] Added NVRAM data compatibility check with previous version due to change in history alarm structure.
 - When downloading from V3.80.0605 while a device with a version older than V3.80.0605 is connected, the following warning message appears.

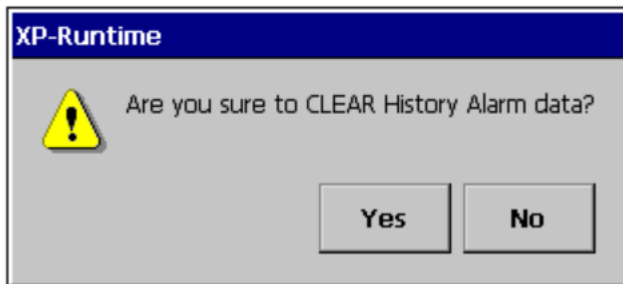


- When downloading V3.80.0605 and starting monitoring without selecting [Delete all monitoring data] while historical alarm data from a version prior to V3.80.0605 remains in NVRAM, the message below appears.





- When selecting No, the menu screen status is maintained without monitoring the device.
- If you select Yes, the device's NVRAM data will be deleted, and a confirmation message window will pop up again.



- If you select Yes, monitoring will begin after deleting the device's NVRAM data.
- When selecting No, the menu screen status is maintained without monitoring the device.