

Recipe Editor

1. Recipe editor function introduction

Recipe editor is one of the adjuncts in the EV5000 software, in order to let view, edit, or new recipe file more expediently.

Support file format: *.rcp, *.erp, *.csv, *.frp

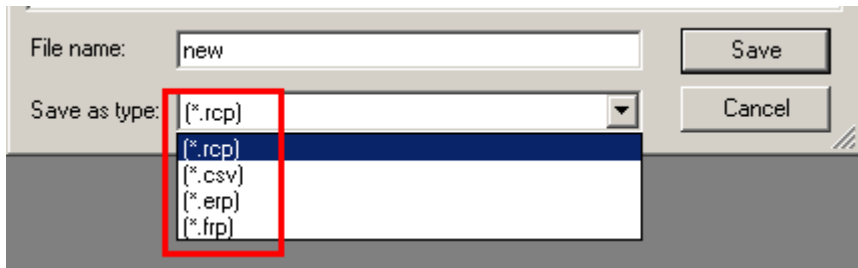


Figure 26.1

Support function:

- (1). Display the data of the recipe file.
- (2). Change the data of the recipe file.
- (3). Import and export CSV file.

2. Recipe editor user interface introduction

(1) The way of running the recipe editor: Click “recipe editor” option of the toolbar in the EV5000 software, as show in the figure 26.2 below.

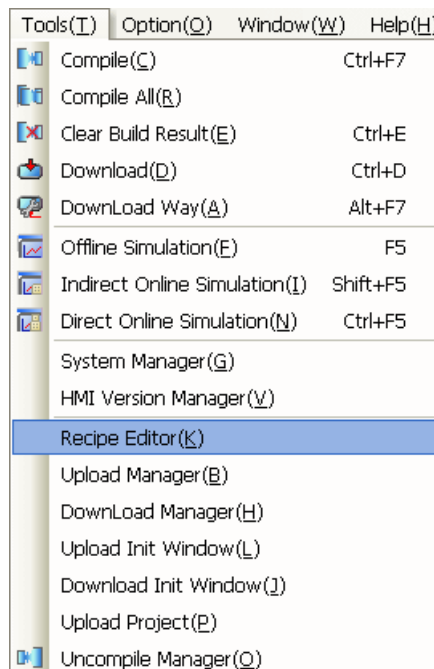


Figure 26.2

(2) The other way of running the recipe editor: Open the recipe editor file in the EV5000

software installation list, click RecipeEditor.exe icon, as show in the figure 26.3 below.



Figure 26.3

(3) User interface of the first running, as show in the figure 26.4 below.

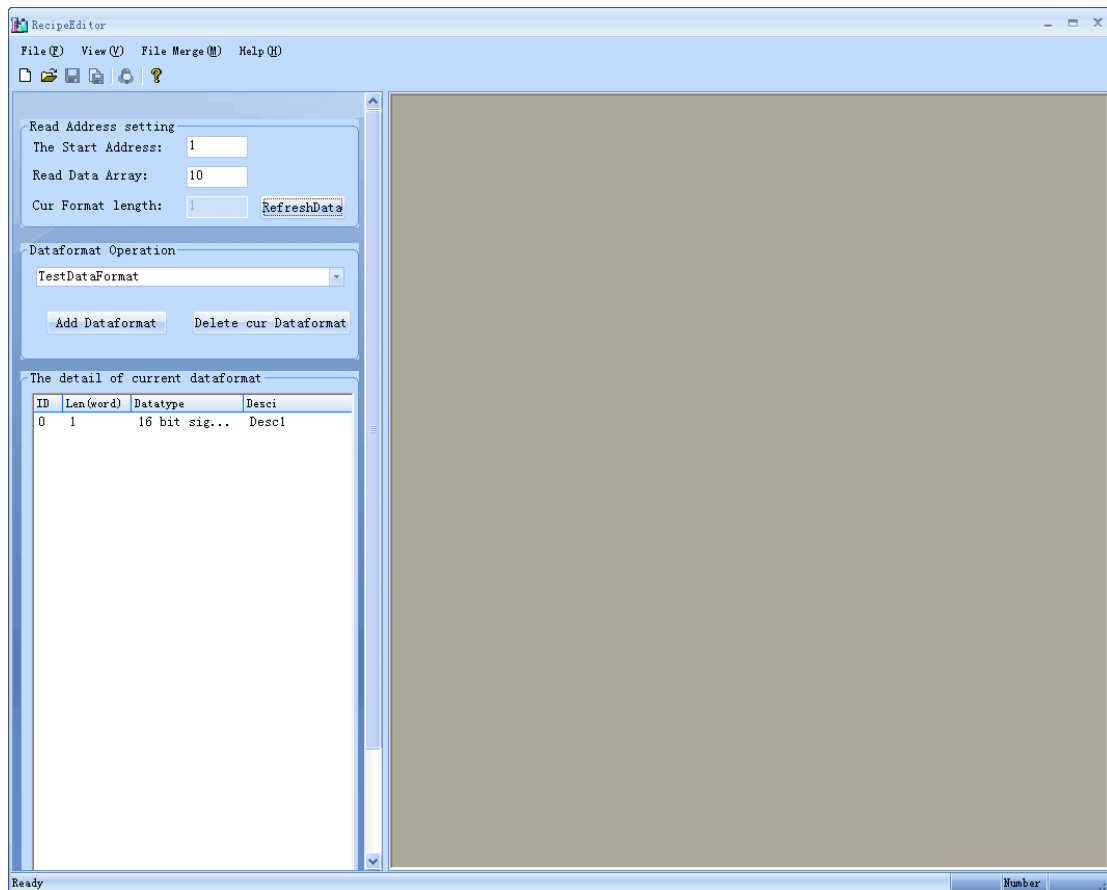


Figure 26.4

(4) Toolbar, menu bar and initial user interface.

Toolbar is as show in the figure 26.5 below, menu bar is as show in the figure 26.6 below.

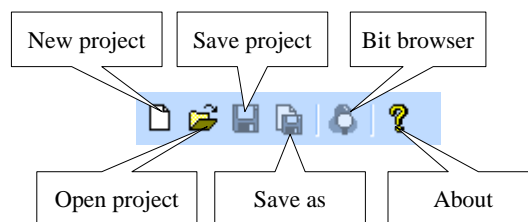


Figure 26.5

File (F) View (V) File Merge (M) Help (H)

Figure 26.6

Click “new project” icon, we can see the initial user interface, as show in the figure 26.7 below.

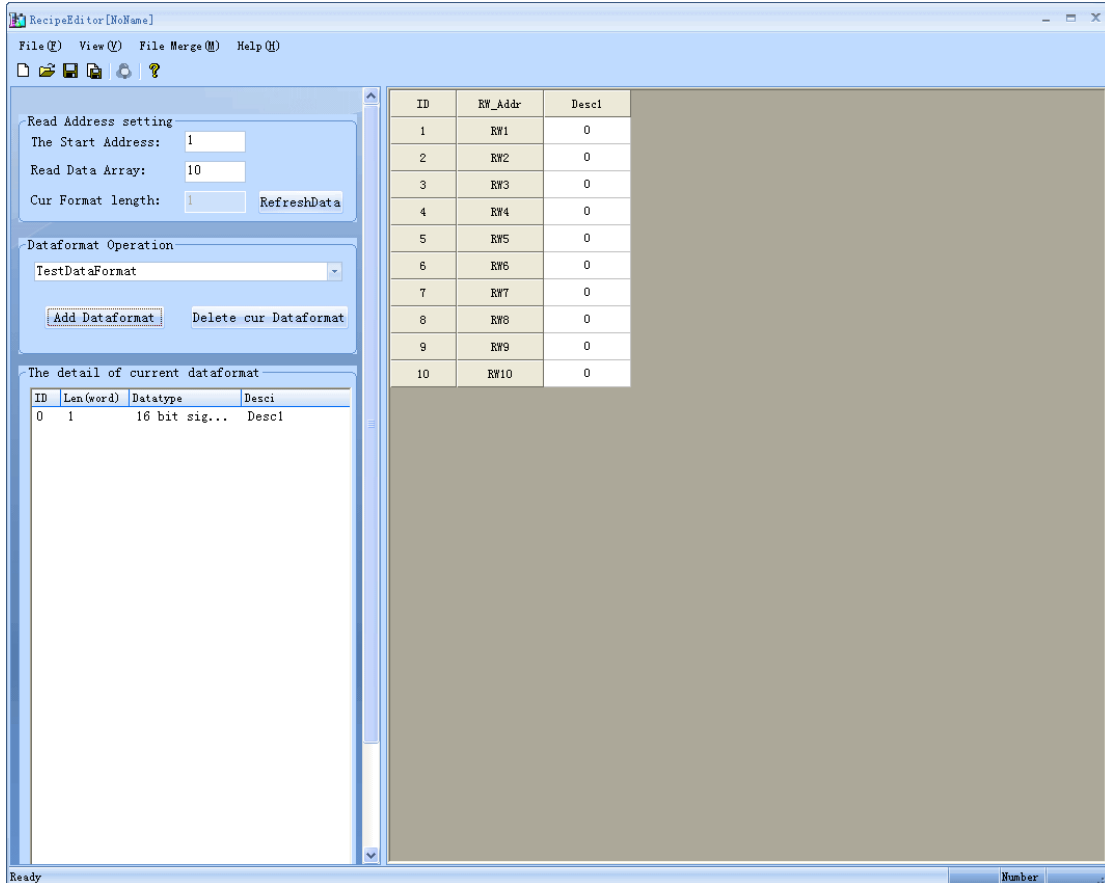


Figure 26.7

(5) Read address setting area, data format operation area, detail of current data format area

Read address setting area is as show in the figure 26.8 below, data format operation area is as show in the figure 26.9 below, details of current data format area is as show in the figure 26.10 below.

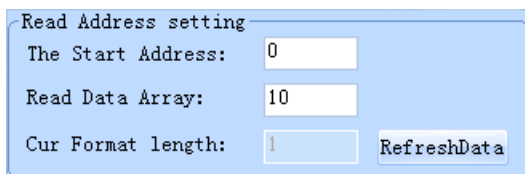


Figure 26.8

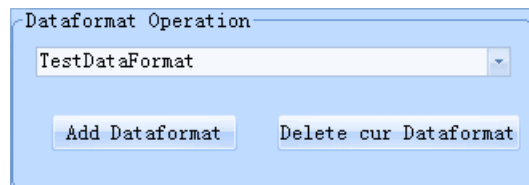


Figure 26.9

The detail of current dataformat

ID	Len(word)	Datatype	Desci
0	1	16 bit signed number	Desc1

Figure 26.10

(6) There are two areas in the recipe editor, they are setting area and data area, setting area can be hidden.

As show in the figure 26.11 below, red pane parts setting area from data area, setting area is on the left, and data area is on the right. Click the red pane part, we can hide the setting area, click again, the setting area part will appear.

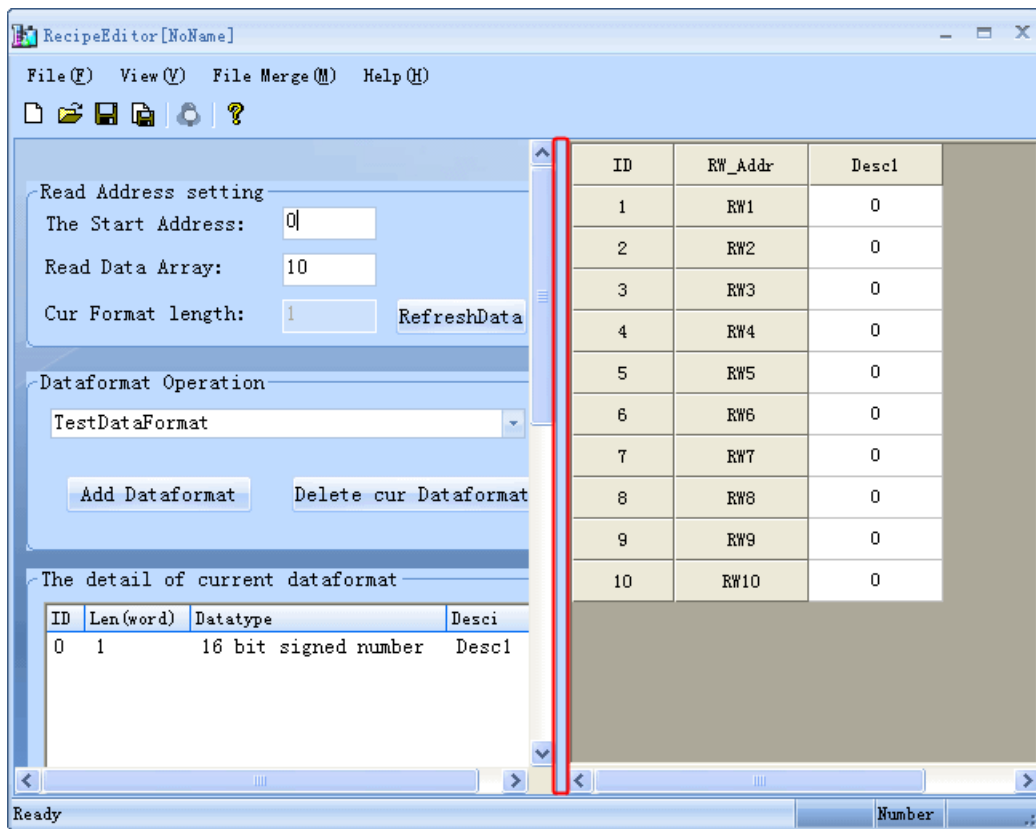


Figure 26.11

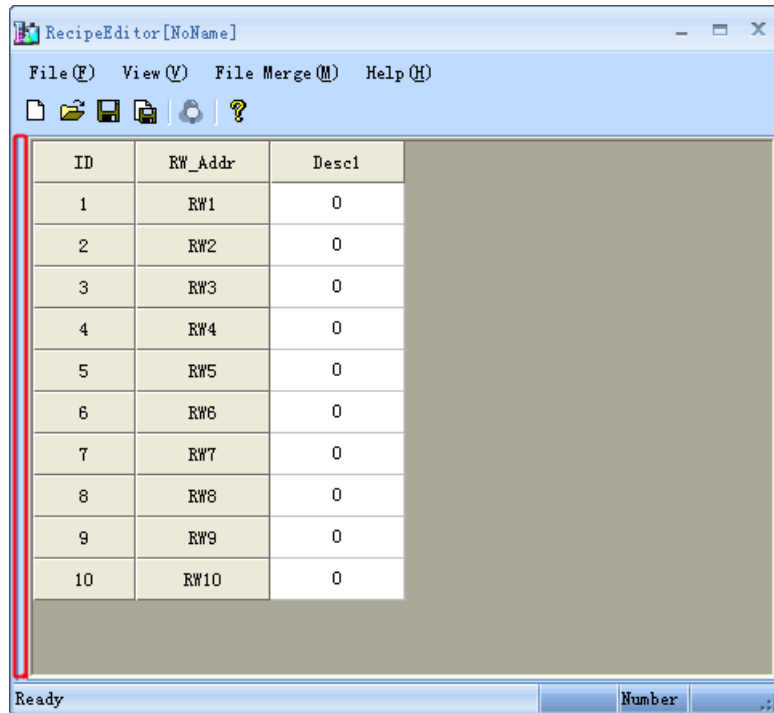



Figure 26.12

(7) Input data and Bit browser

We can input the data directly in data area. If you want to use the bit browser function, you can right click the address you want to see or click  icon in the toolbar, as show in the figure 26.13 below.

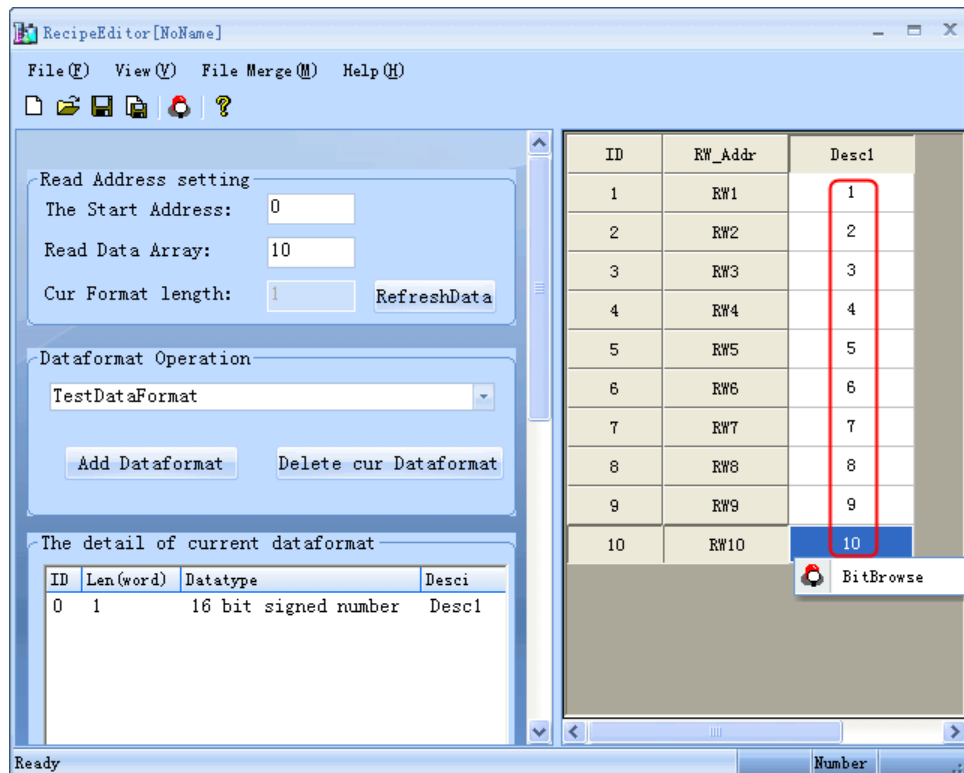


Figure 26.13

As show in the figure 26.13 above, the value of RW9 is 10, and as show in the figure 26.14 below, we can see the address 03 and 01 is red, it means the status is on, we can think it to 1010 according to the binary system expression format, and then 1010 in the binary system is 10.



Figure 26.14

3. Recipe editor operation introduction

(1) Add data format, add data item, and set start address and data length

The process of adding the data format is as show in the figure 26.15 below, the process of adding the data item is as show in the figure 26.16 below, the process of setting start address and data length is as show in the figure 26.17 below.

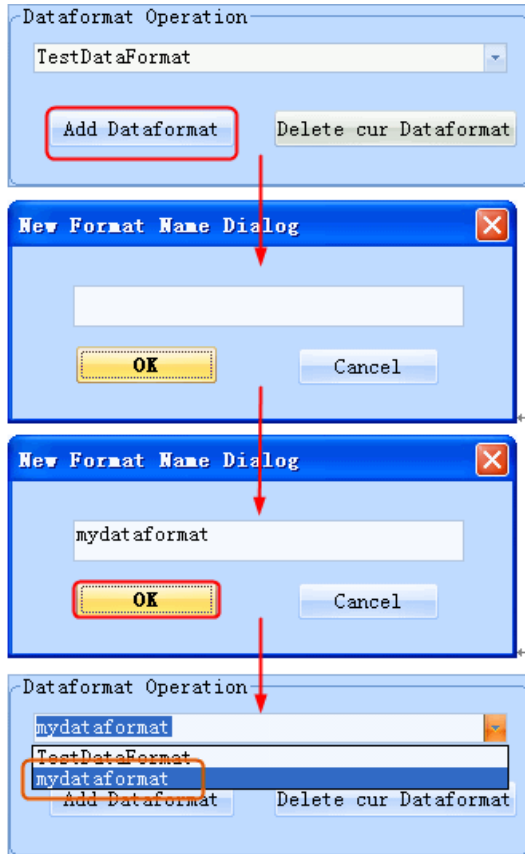


Figure 26.15

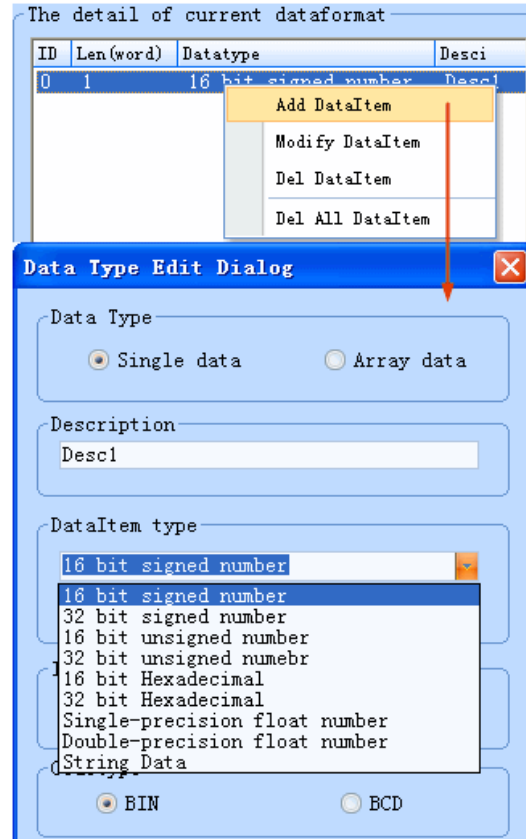


Figure 26.16

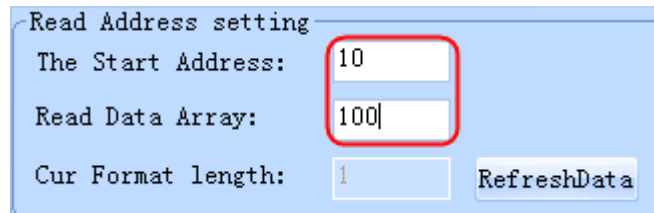

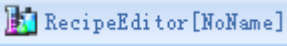


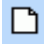
Figure 26.17

(2) Choose data type needed, new, open and save recipe file

Materially, recipe file is the binary system file. Recipe Editor can choose data type according to what we need, and then we can view and edit data intuitively, so if a recipe file is saved as one of the data type, this file will also be opened as this data type in the next opening. We may can not understand the data if the data type are not same.

Notice: Data type is very important, save of type and files of type can be one of the next three types, *.rcp, *.erp and *.csv.

Open recipe editor in the first time, click  icon, you can see 

in the title bar, if you have made a recipe file or opened a recipe file, you click  icon, the save as following dialog box will appear, you must save the old file firstly.

Save as following dialog box is as show in the figure 26.18 below, open following dialog

box is as show in the figure 26.19 below.

If you open a saved recipe file, you can see the file save path in the title bar, as show in the figure 26.20 below.

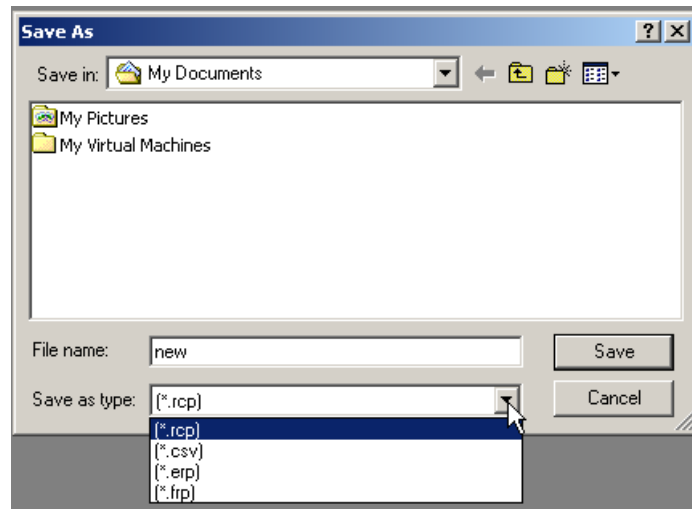


Figure 26.18

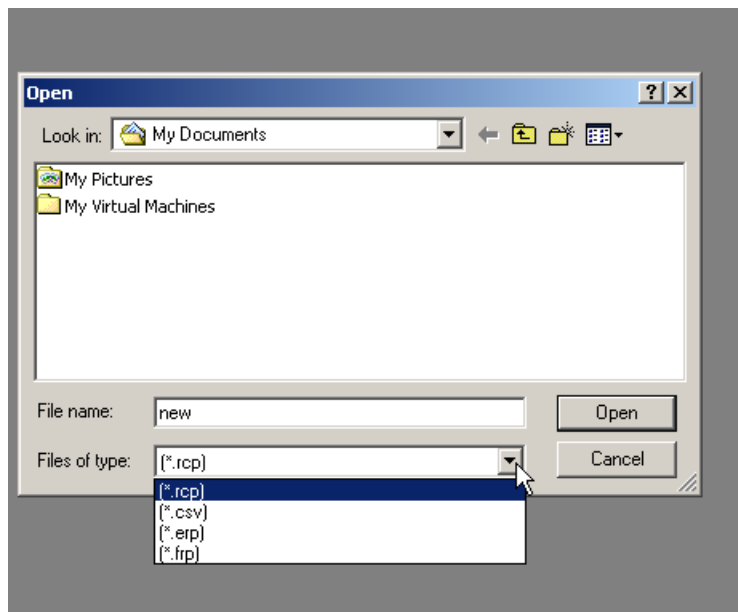


Figure 26.19



Figure 26.20

(3) Change data type when editing, data will refresh

For example, we have choose 16 bit signed, as show in the figure 26.21 below, double click red pane area, the data type edit dialog appears, we can change the data type to 16 bit HEX, as show in the figure 26.22 and 26.23 below.

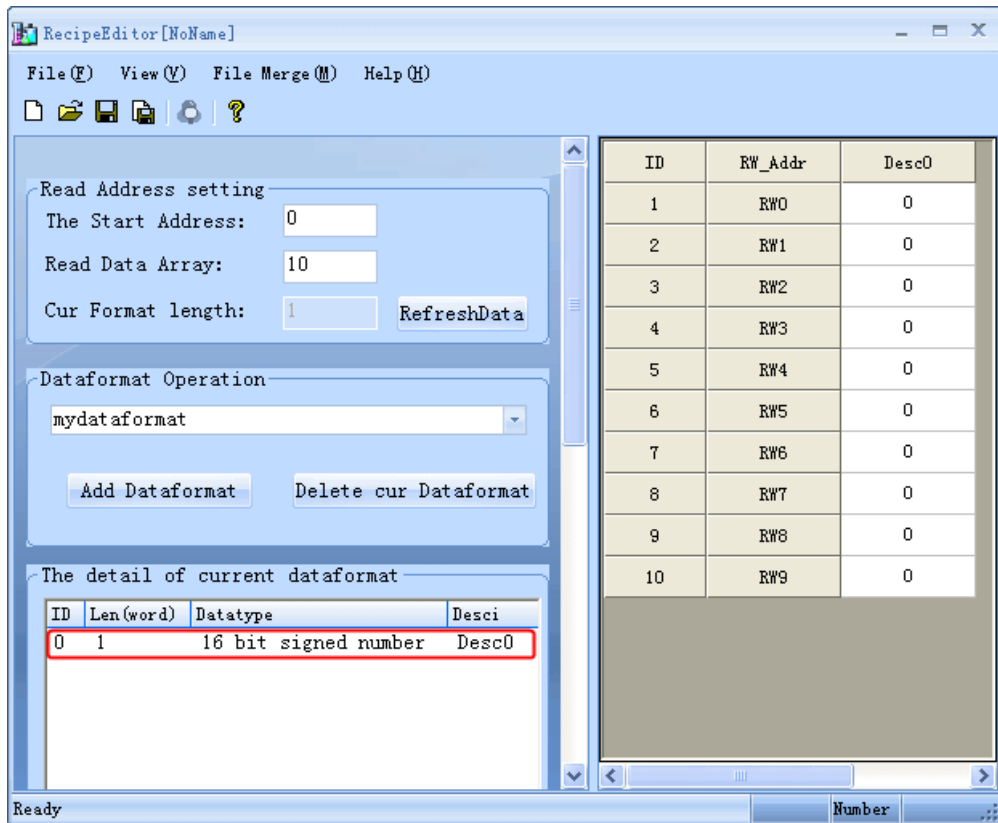


Figure 26.21

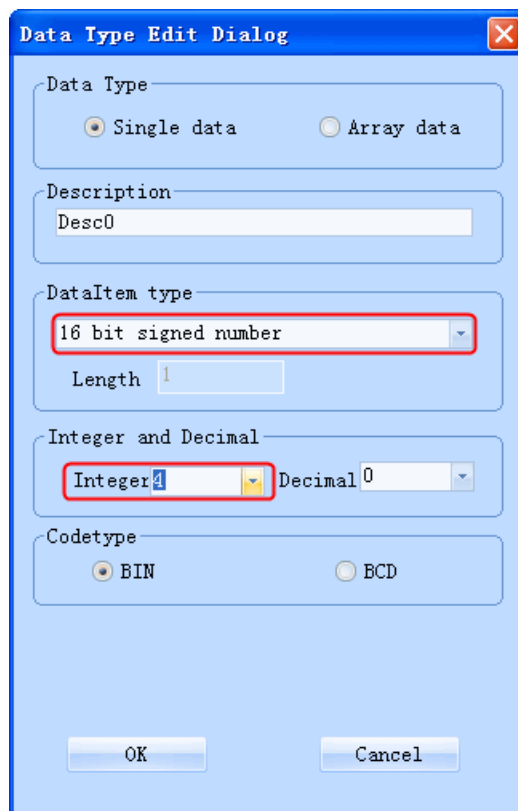


Figure 26.22

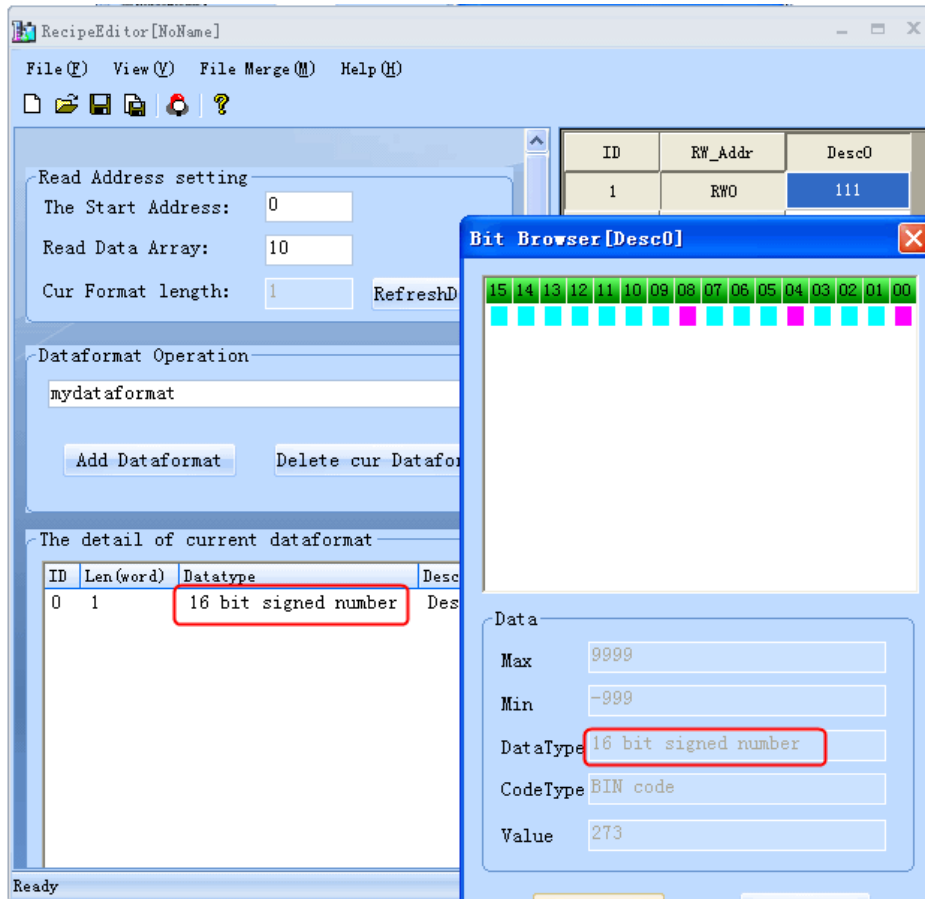


Figure 26.23

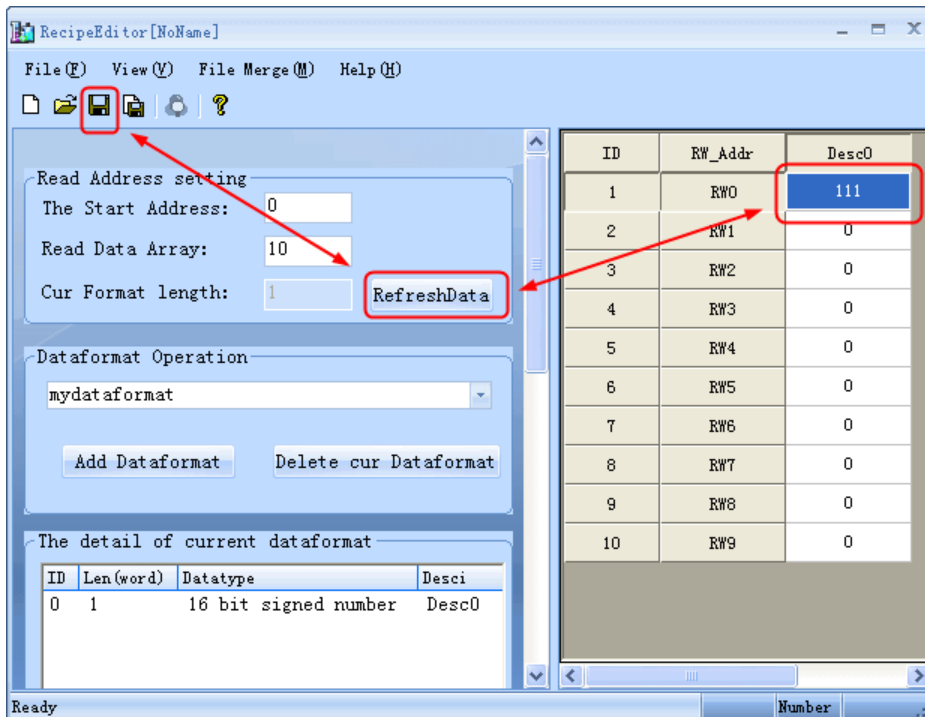


Figure 26.24

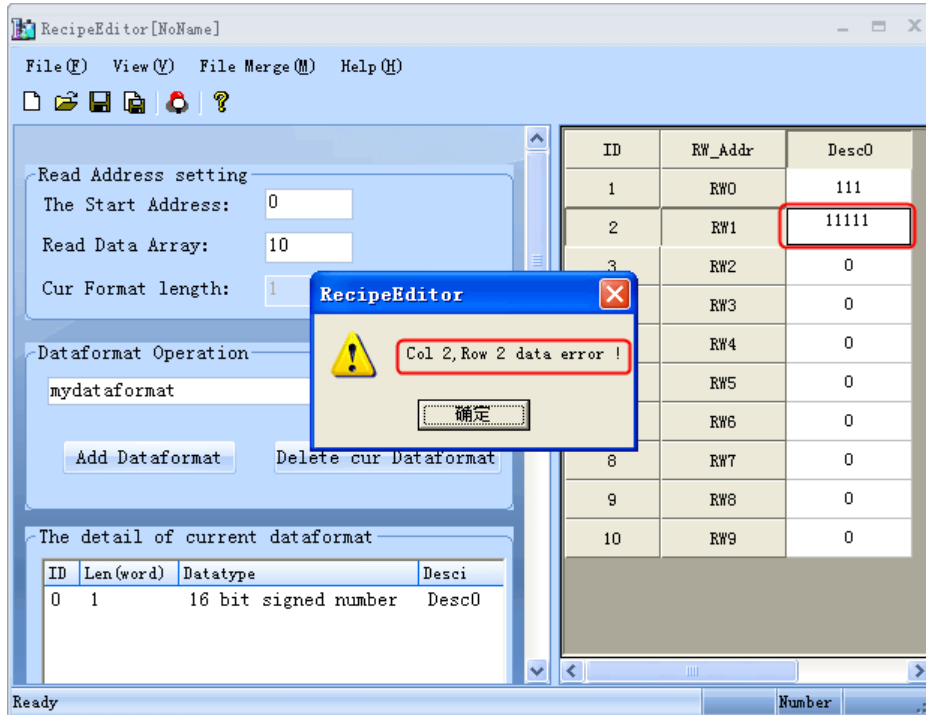


Figure 26.25

Notice: As show in the figure 26.24 and 26.25 above, after we input the data, we should press Enter to save the data, or the data will be lost. The data out of range can not be inputed.

(4) Single data and Array data

As show in the figure above, all of the data is the single data, in other words, it is a group of data.

Array data is multiple groups of data which is the same category, as show in the figure 26.26 and 26.27 below.

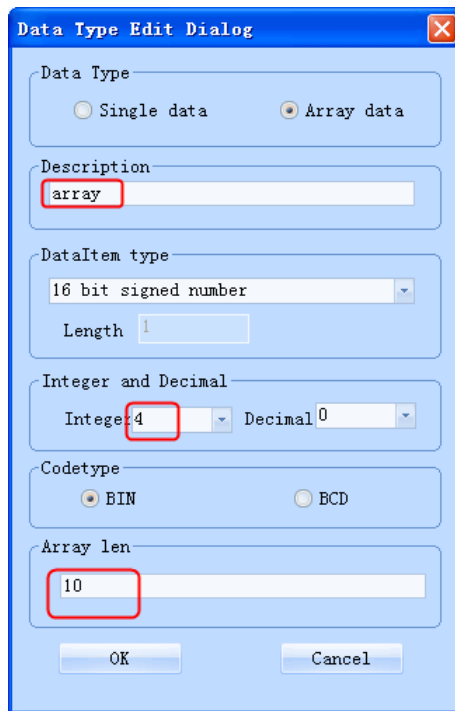


Figure 26.26

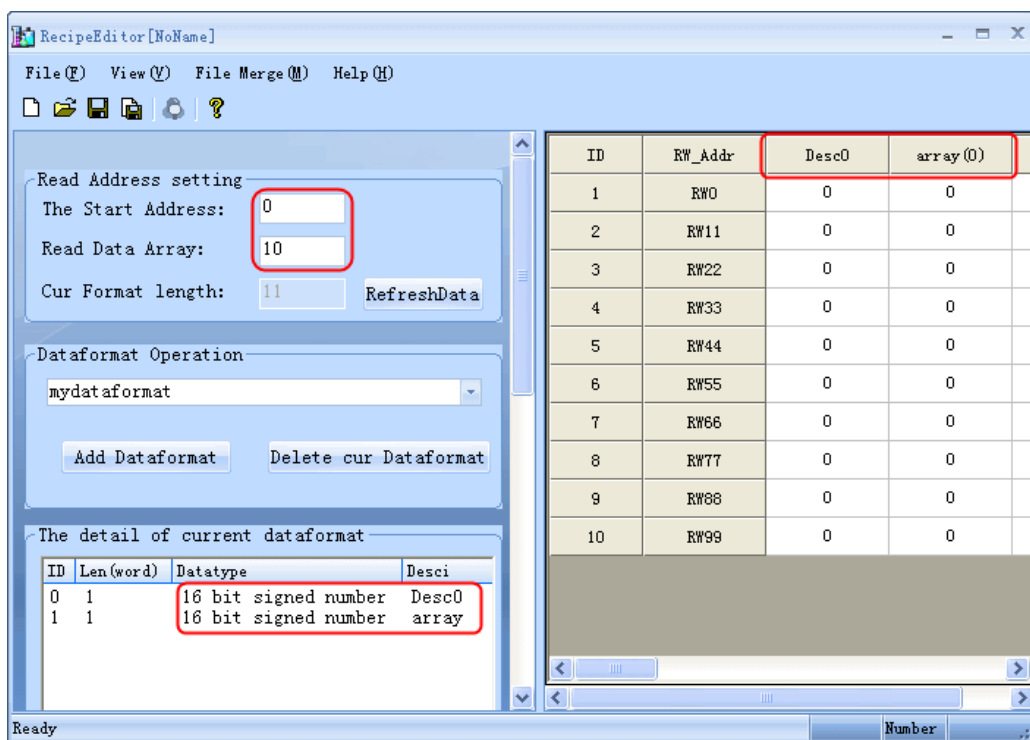


Figure 26.27

(5) Merge function

If two recipe files have different recipe addresses and can be edited respectively, we can use the merge function to merge the two recipe files and then download it to the HMI, as shown in Figure 26.28 below.

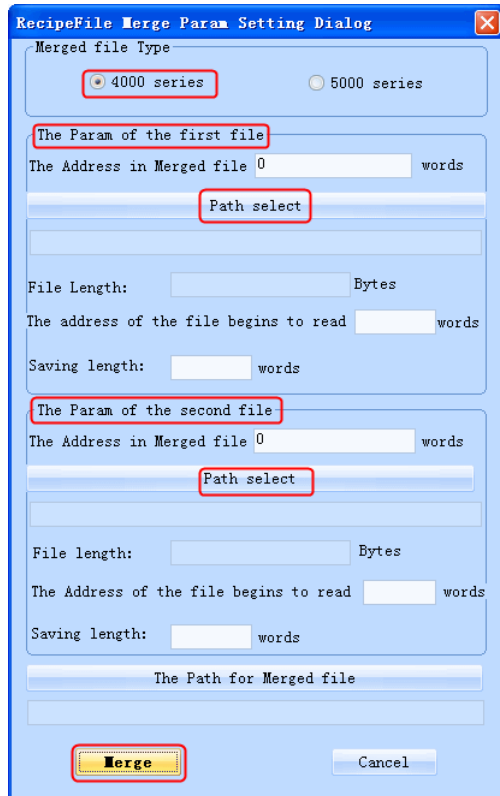


Figure 26.28



Figure 26.29

(6) String Data can be edited in the way of Unicode

As show in the figure 26.29 below.

(7) .rcp, .erp and .csv data type introduce

.rcp: this type can be identified by eView HMI, we can upload and download it through EVMANAGER (please think of the size of the recipe memory card)

.erp: this type can be identified by eView MT5020 series HMI(with USB and SD card), this file can be saved in the USB or SD card, belong to external storage method.

.csv: the file of this type can be opened in Microsoft Excel software, the data can be printed, as show in the figure 26.30 and 26.31 below.

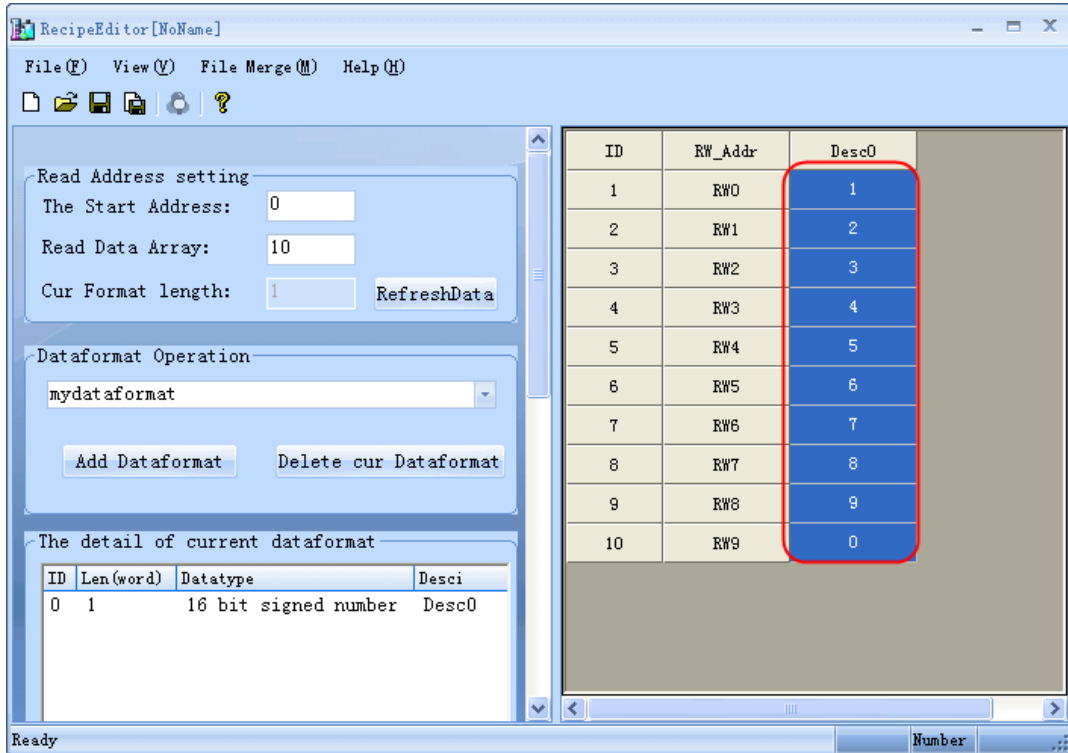


Figure 26.30

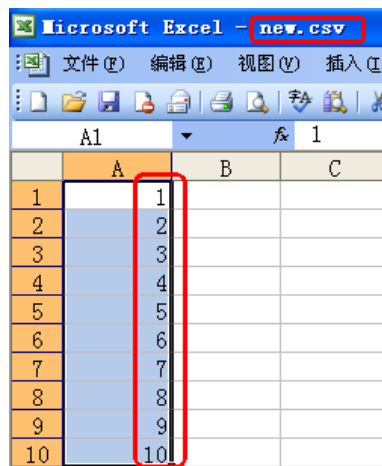


Figure 26.31

(8) Part of the data type support bit browser function

Bit browser function is a special function in the recipe editor software, in order to make viewing expediently, as show in the table below.

Table 1:

Data type	Support bit browser or not
16 bit signed	yes
32 bit signed	yes
16 bit unsigned	yes
32 bit unsigned	yes

16 bit HEX	yes
32 bit HEX	yes
Float	no
Double	no
String Data	no